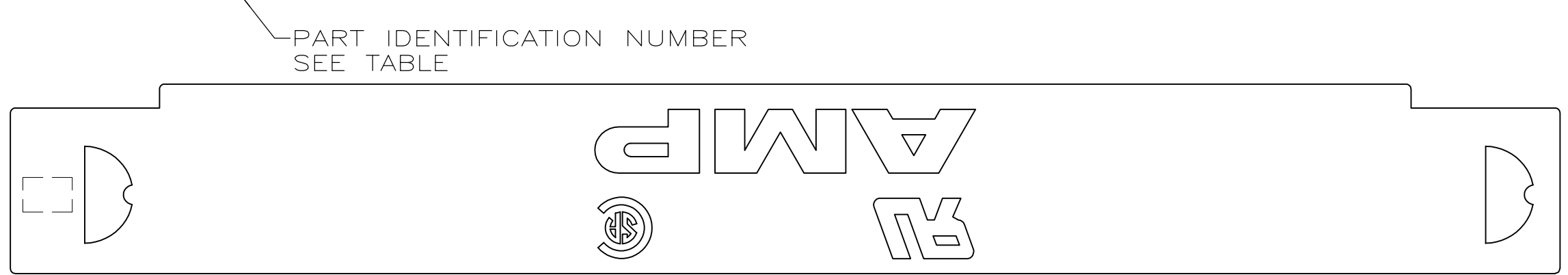
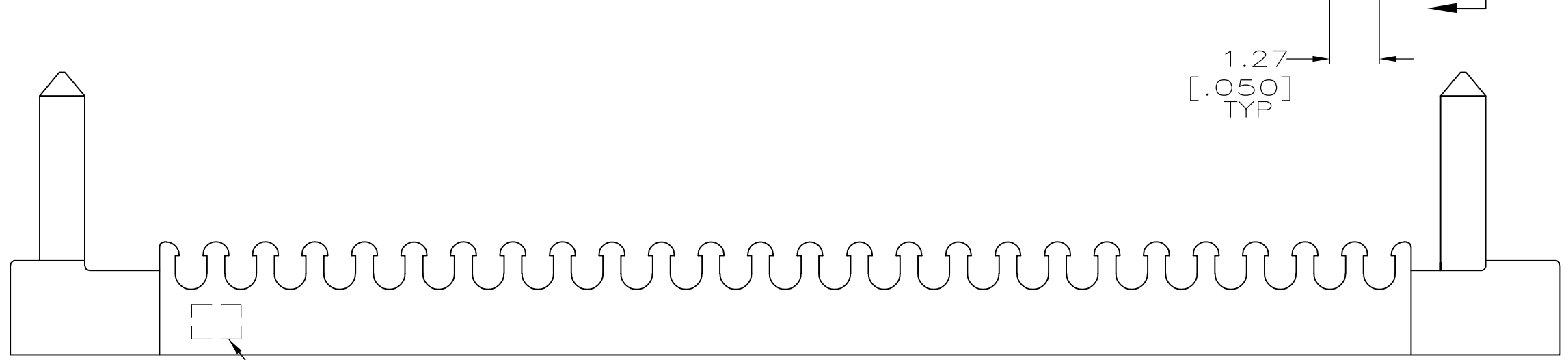
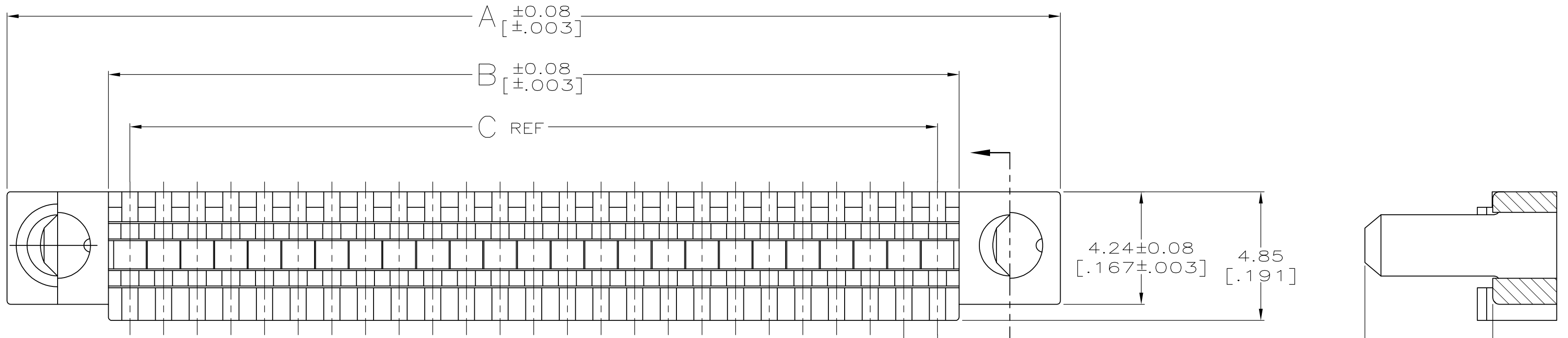


LOC	DIST	REVISIONS					
GP	00	P	LTR	DESCRIPTION	DATE	OWN	APVD
		E		REVISED PER ECO-14-009463	02JUL2014	AP	SB



- ① NYLON OR POLYESTER, UL 94V-0 RATED, COLOR: SEE TABLE.
- ② RECOMMENDED WIRE: 28 AWG OR 30 AWG SOLID OR 7 STRAND. SEE TABLE FOR INSULATION DIA. WIRE MUST BE APPROVED BY AMP INC.
- ③ TWO COVERS REQUIRED PER CONNECTOR ASSEMBLY.
- ④ OBSOLETE PARTS: OBSOLETE CIS STREAMLINING PER D.RENAUD/D.SINISI

	0.74-0.79	[.029-.031]	GRAY	2	62.23	[2.450]	63.86	[2.514]	71.50	[2.815]	100	1-750877-9	
	0.74-0.79	[.029-.031]	GRAY	2	41.91	[1.650]	43.54	[1.714]	51.18	[2.015]	68	1-750877-7	
	0.74-0.79	[.029-.031]	GRAY	2	30.48	[1.200]	32.11	[1.264]	39.75	[1.565]	50	1-750877-5	
④ OBSOLETE	0.74-0.79	[.029-.031]	GRAY	2	24.13	[.950]	25.76	[1.014]	33.40	[1.315]	40	1-750877-4	
	0.74-0.79	[.029-.031]	GRAY	2	15.24	[.600]	16.87	[.664]	24.51	[.965]	26	1-750877-2	
④ OBSOLETE	0.81-0.91	[.032-.036]	BLACK	1	62.23	[2.450]	63.86	[2.514]	71.50	[2.815]	100	750877-9	
OBSOLETE	0.81-0.91	[.032-.036]	BLACK	1	49.53	[1.950]	51.156	[2.014]	58.801	[2.315]	80	750877-8	
	0.81-0.91	[.032-.036]	BLACK	1	41.91	[1.650]	43.54	[1.714]	51.18	[2.015]	68	750877-7	
	0.81-0.91	[.032-.036]	BLACK	1	30.48	[1.200]	32.11	[1.264]	39.75	[1.565]	50	750877-5	
④ OBSOLETE	0.81-0.91	[.032-.036]	BLACK	1	24.13	[.950]	25.76	[1.014]	33.40	[1.315]	40	750877-4	
	0.81-0.91	[.032-.036]	BLACK	1	15.24	[.600]	16.87	[.664]	24.51	[.965]	26	750877-2	
	WIRE OUTER DIA	②	COLOR	PART ID NO	C			B		A		NO OF POSN	PART NUMBER

THIS DRAWING IS A CONTROLLED DOCUMENT.

DWN	B. MCMASTER	14JUNE04	 TE Connectivity
CHK	S. SHUEY	14JUNE04	
APVD	M. WALMSLEY	14JUNE04	
NAME	COVER, TERMINATING, DISCRETE WIRE, AMPLIMITE		
DIMENSIONS:	TOLERANCES UNLESS OTHERWISE SPECIFIED:		PRODUCT SPEC
單位: 毫米 [INCHES]	一般公差		製品規格
0 PLC ± -	1 PLC ± -		APPLICATION SPEC
2 PLC ± 0.13 [0.005]	3 PLC ± -		取付適用規格
4 PLC ± -	ANGLES ± -		—
MATERIAL	FINISH	WEIGHT	SIZE
材料	仕上	-	A2
①			CAGE CODE
			00779
			DRAWING NO
			G-750877
			RESTRICTED TO
			—
			CUSTOMER DRAWING
			SCALE
			8:1
			SHEET
			1 OF 1
			REV
			E